



MONTHLY MEMBERSHIP PROGRESS REPORT

District 27 B1

Results as of: 5/31/2017

GMT: Judy Hankom

LOCATION WISCONSIN

GMT CA

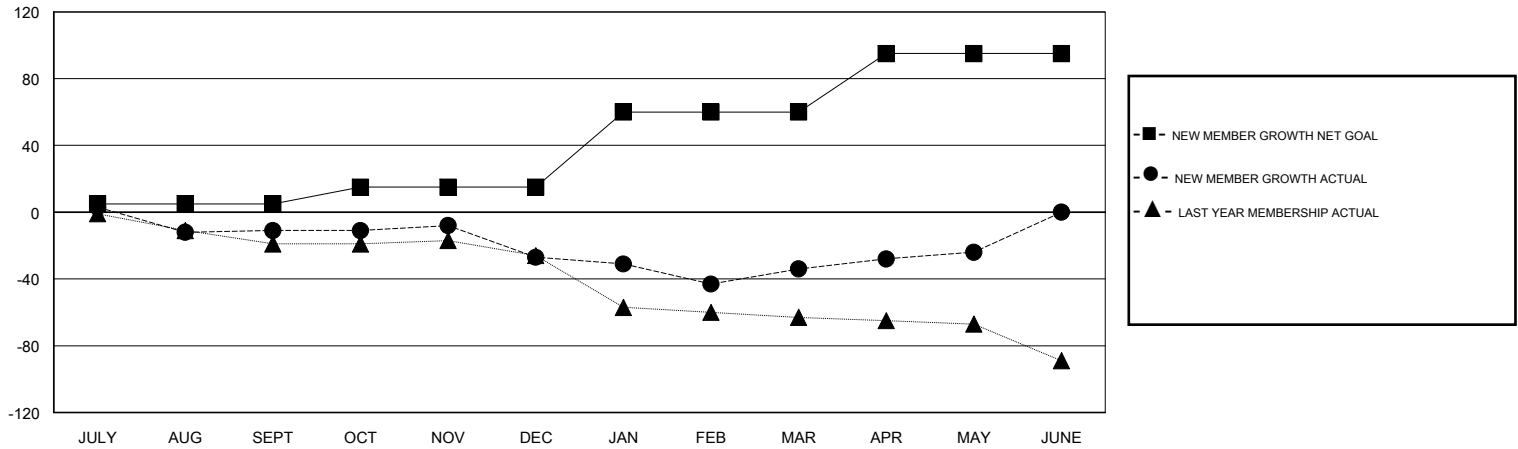
Clubs			
RESULTS FOR 2016-2017			
QUARTER	NEW CLUB GOAL	NEW CLUBS	DROPPED CLUBS
JULY/AUG/SEPT	0	0	0
OCT/NOV/DEC	0	0	1
JAN/FEB/MAR	1	0	1
APR/MAY/JUNE	0	0	0

Members			
RESULTS FOR 2016-2017			
QUARTER	NEW MEMBER GROWTH NET GOAL (not reinstated or transfers)	NEW MEMBER GROWTH ACTUAL (not reinstated or transfers)	DROPPED MEMBERS ACTUAL (including transfers)
JULY/AUG/SEPT	5	43	54
OCT/NOV/DEC	10	44	60
JAN/FEB/MAR	45	42	49
APR/MAY/JUNE	35	42	32

GOALS AND ACTUAL NEW CLUBS CUMULATIVE



GOALS AND ACTUAL MEMBERS CUMULATIVE



DROPPED CLUBS: 2	49 CLUBS OF 70 ADDED 1 OR MORE NEW MEMBERS	<u>GENDER DISTRIBUTION</u>
DROPPED MEMBERS	CLICK HERE FOR CUMULATIVE MEMBERSHIP DATA	MALE 1,575 (79.95%)
DECEASED 37		FEMALE 395 (20.05%)
CLUB CANCELLED 0		TOTAL FAMILY UNIT MEMBERS 321
OTHER 158		FAMILY MEMBERS PAYING HALF DUES 163
TOTAL 195		